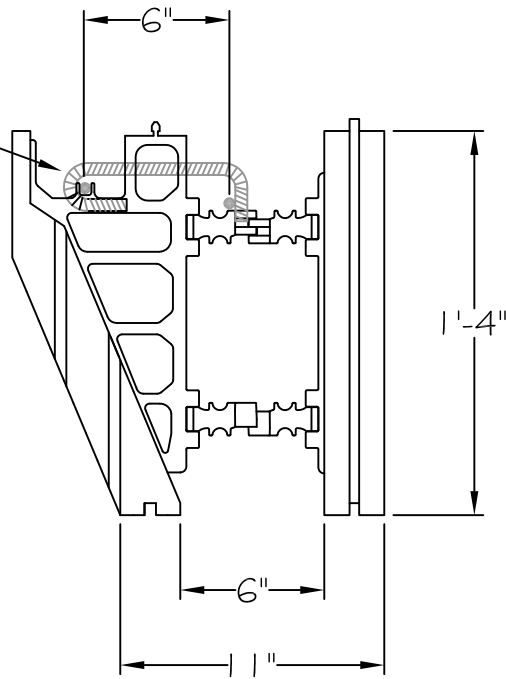


TYPICAL BRICKLEDGE
 REINFORCING - STIRRUP
 REQUIREMENTS VARY DEPENDING ON
 LOAD - REFERENCE STRUCTURAL
 SPECS.



CELBLOX[®]
 PERFORMANCE WALL SYSTEMS

1200 Industrial St., Reedsburg, WI 53959
 Phone: (608) 524-5813 ■ Fax: (608) 524-2362
 www.CELBLOX.com

**CELBLOX
 6" BRICKLEDGE
 REINFORCING**

DATE: 2016
SCALE: 1 1/2" = 1'-0"
REVISION:
DRAWING NUMBER: